

10,000 lb. rolling capacity

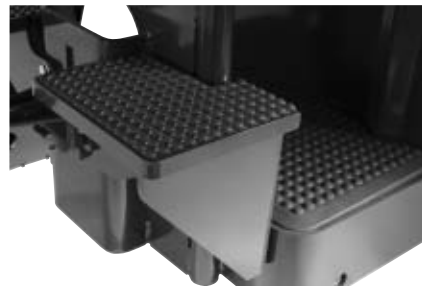
Main Truck Specifications

CHARACTERISTICS	1	Manufacturer		Barrett	1	
	2	Model	Model designation	SGB	2	
			Long model code	SGTT1W4G20BV		
	3	Rolling Load Capacity		lb (kg)	10,000 (5000)	3
	4	Power Type	Electric		24 Volt	4
	5	Operator Type	Stand-up		Walkie/Rider	5
6	Tire Type			Solid Rubber	6	
DIMENSIONS	7	Wheels	Number - front/rear		1 / 2	7
	8	Overall Dimensions	Length - less coupler	in (mm)	52.8 (1340)	8
			Width - chassis	in (mm)	35.1 (890)	
			Height - top of steerhead	in (mm)	55.7 (1415)	
	9					9
	10					10
	11	Wheelbase		in (mm)	32.7 (830)	11
	12	Grade Clearance	Under chassis	%	31	12
	13	Turning Radius	Minimum outside	in (mm)	41 (1040)	13
	14	Front Overhang		in (mm)	8.25 (210)	14
PERFORMANCE	15	Truck Weight	Less battery	lb (kg)	1140 (541)	15
			Drive tire	in (mm)	4 x 10 (102 / 254)	
			Trail wheels	in (mm)	7 x 3 (180 x 75)	
18	Speed - Travel	Gear ratio 14.1:1				18
			No load	mph (kph)	8.7 (14)	
			Full load	mph (kph)	5 (8)	
19	Drawbar Pull	Normal	lb (kg)	200 (91)	19	
			Maximum	lb (kg)		710 (322)
BATTERY	20	Battery Compartment	L x W x H	in (mm)	32 x 13.5 x 31 (813 x 343 x 803)	20
	21	Amp Hr Capacity	Min / Max (6-hr)	Ah	450 / 750	21
	22	Weight	Min / Max	lb (kg)	854 / 1500 (387 / 680)	22
	23	Lead Length	Position "B"	in (mm)	20 (508)	23
	24	Connector		type	SB 175 Red	24

*Compartment dimensions shown without battery gates. (31" x 13.5" x 31" with gates.)



Steerhead includes two butterfly controls allowing thumb or fingertip actuation of travel and direction.



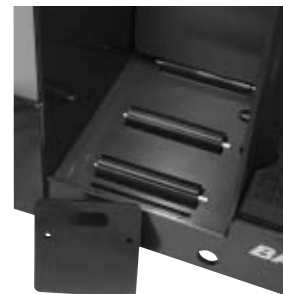
Rugged twin picking steps designed with traction padding are available as optional equipment.



Standard jaw coupler has a robust design for secure towing. Its foot-operated release is conveniently located inside the operator compartment.



Optional convenience tray keeps operator items organized.



Optional battery rollers make change out quick and easy.